



FOR RENTAL

# SL-Series, Telescopic Hydraulic Gantries by ENERPAC

Typical SL400 configuration with Skid Tracks, Header Beams and Side Shifts



## SL Series

Capacity with 4 legs

**600 - 4000 kN**

Lift Height

**4,70 - 9,14 meters**



### Skid Tracks

Allows for easy levelling of the gantry tower and reduce ground bearing pressure. Available in two standard lengths, 3 and 6 m.



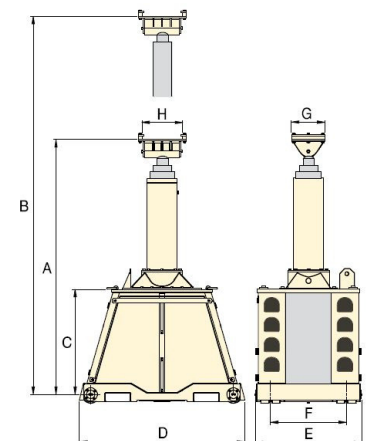
### Header Beams

Sold in pairs and includes lifting points and fork pockets for easy positioning on gantry towers. Available in standard lengths of 8, 10 and 12 meters. Custom lengths available on request

- Build-in load holding valves to prevent drifting
- Double-acting cylinders with internal retract porting eliminate hazards to external plumbing
- SL60 and SL125 are provided with a hand crank to easily switch to free wheel mode
- SL400 utilizes same accessories as SBL-Series.



< SL-400 Gantry during load testing



Maximum Capacity (4 legs) kN	Model Number (4 legs)	Retracted Height A (mm)	Stage 1		Stage 2		Stage 3		Base Height C (mm)	Base Length D (mm)	Base Width E (mm)	Track Gauge F (mm)	Beam Plate Length G (mm)	Beam Plate Width H (mm)	Weight per leg (kg)
			Max. Height B (mm)	Max. Capacity (kN)	Max. Height B (mm)	Max. Capacity (kN)	Max. Height B (mm)	Max. Capacity (kN)							
600	SL60	2004	3404	150	4704	150	—	—	1285	1160	800	629	410	315	1050
1250	SL125	2640	4575	313	6640	313	—	—	1807	1566	932	612	350	320	2130
3000	SL300	2705	4605	750	6700	500	—	—	1900	1700	880	610	400	490	3250
4000	SL400	3166	5224	1000	7232	1000	9140	460	1378	2023	1256	914	400	490	4600