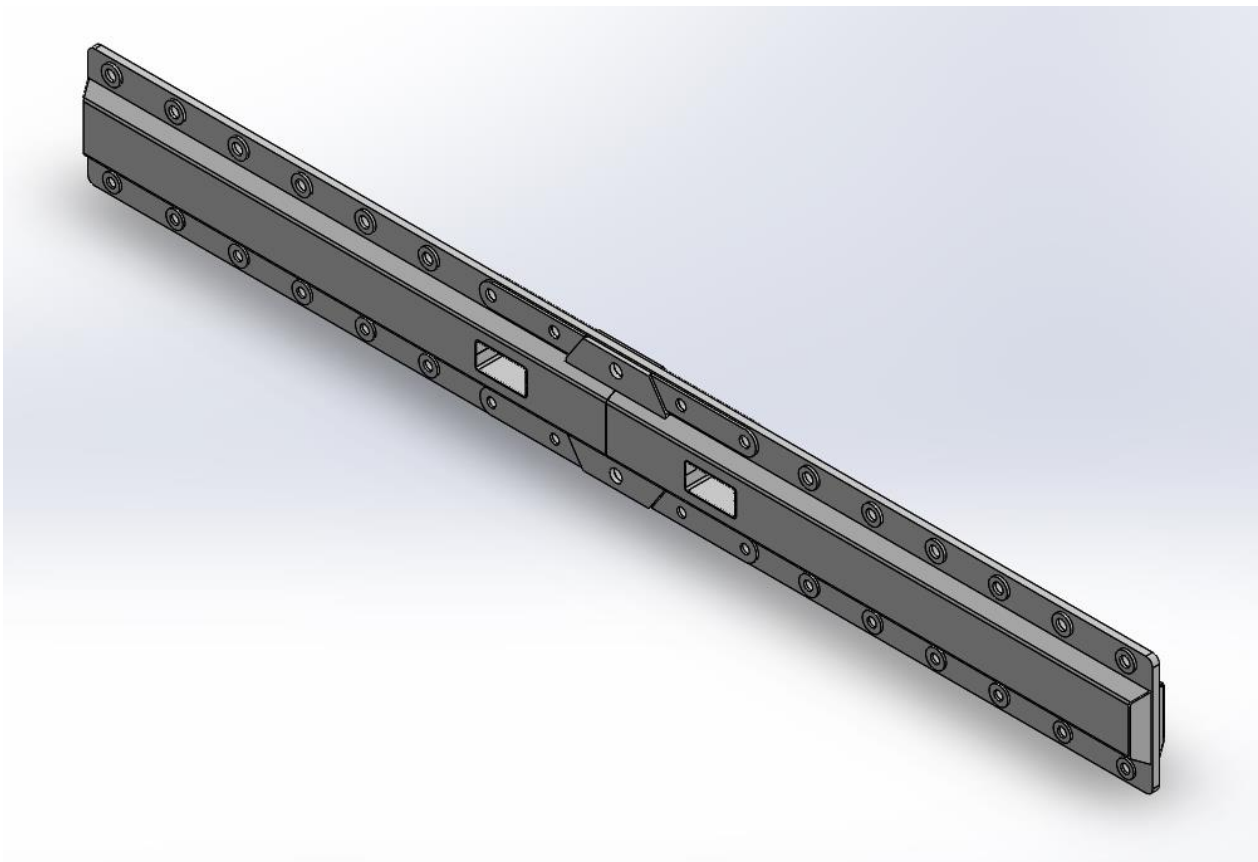


---

## Usersmanual EVK5060



## Table of contents

1. Requirements	
1.1.1. Lifting Instructions	Page 3
1.1.2. Periodic inspection and visual inspections	Page 3
1.1.3. Nature visual inspections and maintenance work	Page 3
1.1.4. Safety Instructions	Page 4
1.1.5. Auxiliary Materials	Page 4
1.1.6. Warranty	Page 4
1.1.7. General Bolt Regulations	Page 5
1.1.8. Specific requirements connection plate	Page 5
2. Lifting Tables	
2.1.1. Userdrawing one part	Annex 1
2.1.2. Lifting table two parts	Annex 2

## 1. Requirements

The EV5060 hoisting structure must comply with the conditions specified in the manufacturer's user manual.

### 1.1.1 Lifting instructions

- Maximum Sling Angle 60°
- The load at the lifting points must be evenly distributed.
- Avoid impact loads on the lifting equipment
- Make sure that additional lifting equipment is properly hooked or tightened

### 1.1.2. Periodic inspections and visual inspections

- Spreaders / lifting beams must be visually inspected once a year by an expert person. A registration must be kept of this, in which the name and signature of the executing person must be mentioned as well as: date and findings.
- Spreaders / lifting beams must be tested if a repair or modification has been carried out at the beam. Despite the fact that it is not mandatory, we advise you to have the beam tested at least once every two years, because often heavier weights are moved and because people often work with it intensively.

### 1.1.3 Visual inspections and maintenance work

- During the annual inspection you should pay attention to: general condition and specifically to deformations, rust formation, wear of construction parts, lifting eyes, lashing eyes and readability of the markings.
- Contact your supplier if deformations, rust formation or wear of structural parts, lifting eyes and lashing eyes occur. Do not carry out any repairs such as: repair work at the lifting beam without the written permission of the manufacturer / supplier.
- In case of superficial rust formation, clean the material well with a wire brush, degrease and then paint over.
- The following indications must be present on the equator: WLL = safe working load, own weight, if it exceeds 100 kg, a type plate with the date, certificate number, CE mark and name of inspection company. The WLL must be clearly legible on the equator. Keep it all legible. Re-apply the information if the information is no longer readable. Otherwise, contact your supplier.

#### 1.1.4 Safety instructions

- When working with spreader / lifting beams you must wear a safety helmet, use work gloves and safety shoes.
- Only use the spreader / lifting beams for work it is suitable.
- Ensure good communication between the operator, people in the workplace and ensure that everyone who works with the lifting beam is aware of the correct hand and arm signals and the safety regulations for the spreader / lifting beams
- Lift without shocks or impacts and ensure that nobody is within the pivot range. Never walk or reach under the lifting beam with or without load and keep sufficient distance when lifting. Keep body parts away from dangerous places, such as where the load touches the ground and points where the lifting beam is attached. Only release the load from the lifting beam if the load is fully supported and there is no tension left on the fixture with the spreader / lifting beams.
- Persons under the age of 18 and unauthorized persons are not allowed to work with spreader / lifting beams.
- It is strictly forbidden to transport people with the spreader / lifting beams.
- If there is even the slightest doubt about, for example, not lifting the load or condition of the lifting beam.
- Maintenance work on the lifting beam may only be carried out when the equator is disconnected from the hoisting gear. Check the condition of the lifting beam for each use and check the connections to the hoisting gear.

#### 1.1.5 Auxiliary materials

- Only use auxiliary materials that meet the legal requirements and requirements.  
If in doubt, contact your supplier.

#### 1.1.6 Warranty

- The guarantee on newly supplied spreader / lifting beams is 6 months for construction errors, provided that the spreader / lifting beam is used in accordance with the regulations and the spreader / lifting beam is still provided with the original nameplate.
- Damage caused by transport in the event of a new delivery must be reported the same day by telephone or by fax and e-mail, stating the certificate number.

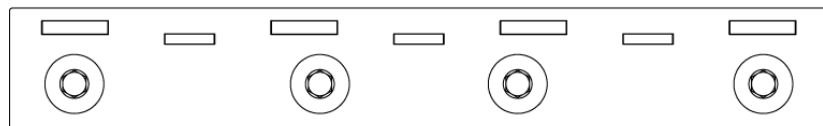
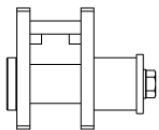
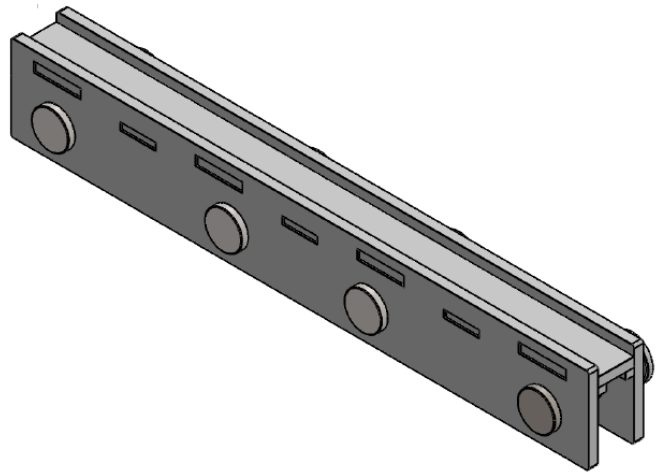
#### 1.1.7 General Bolt Regulations

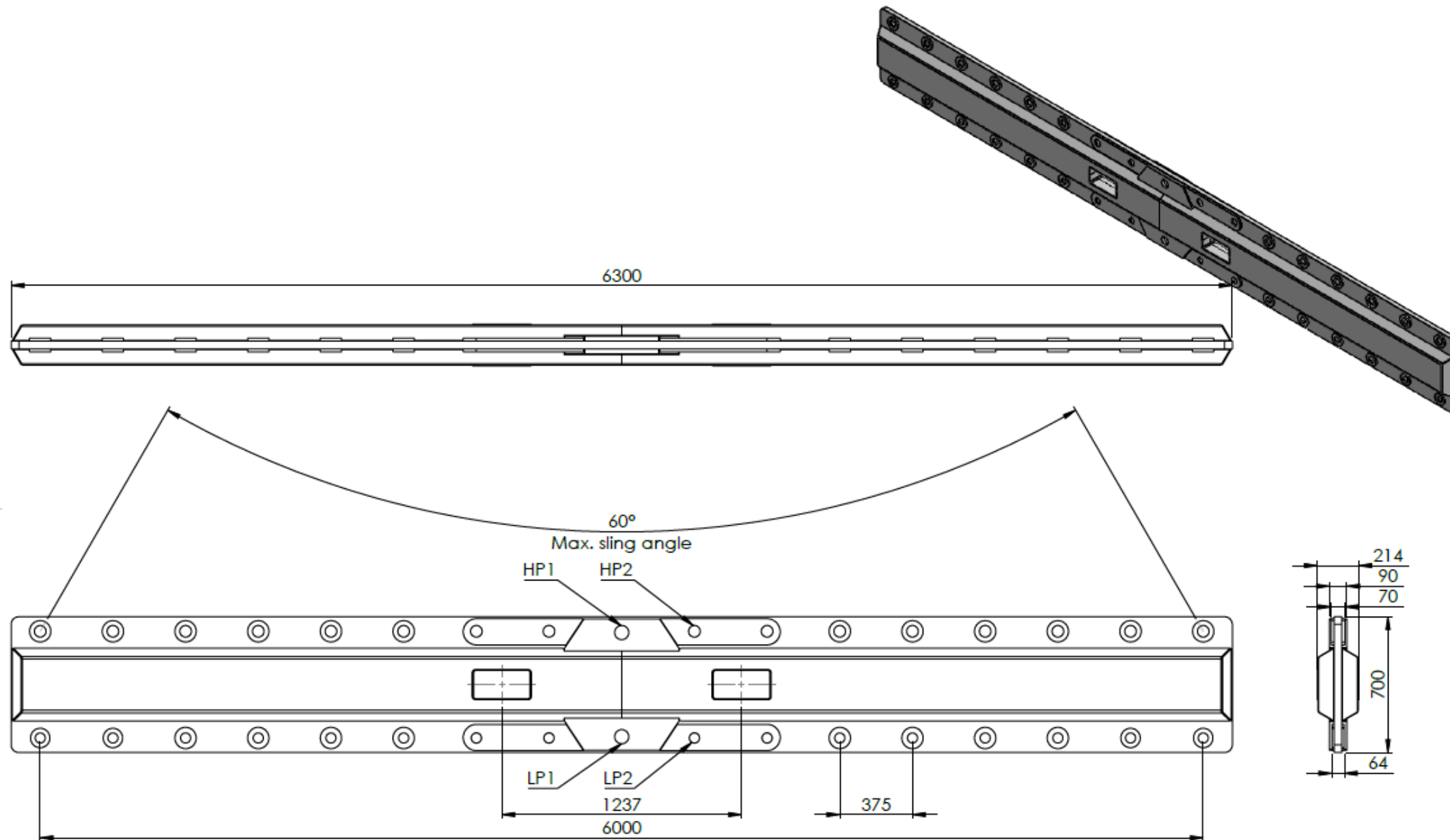
- Bolts and nuts in one connection must come from one and the same manufacturer.
- Surface treatment of the bolts and nuts may only be applied under the control of the manufacturer.
- The label states:
  - CE logo
  - Lot number
  - Reference to NEN-EN 15048-1: 2016 and
  - Identification number of the certified body and producer
  - Dimensions
  - Strength class
  - Processing and reference to ISO standard (bolts ISO 4014 or 4017, nuts ISO 4032)
- The bolts and nuts must have:
  - Manufacturer marking
- Bolts must be inspected for damage before use.

### 1.1.8 Specific Lifting instructions coupling plate

This specifies the requirements for mounting the coupling plate.

- This concerns M24 bolts.
- The bolt and nut must be tightened by hand.
- As long as the prescribed rules are adhered to and the bolts are not pulled beyond the permanent limit of elongation, the bolts can be re-used again and again.  
The bolts must be replaced when there is a high shock load on the structure.





**Lifting Beam Koppelbaar 50T - 6m**

Type: EVK5060.02.01

Weight: 1937 KG

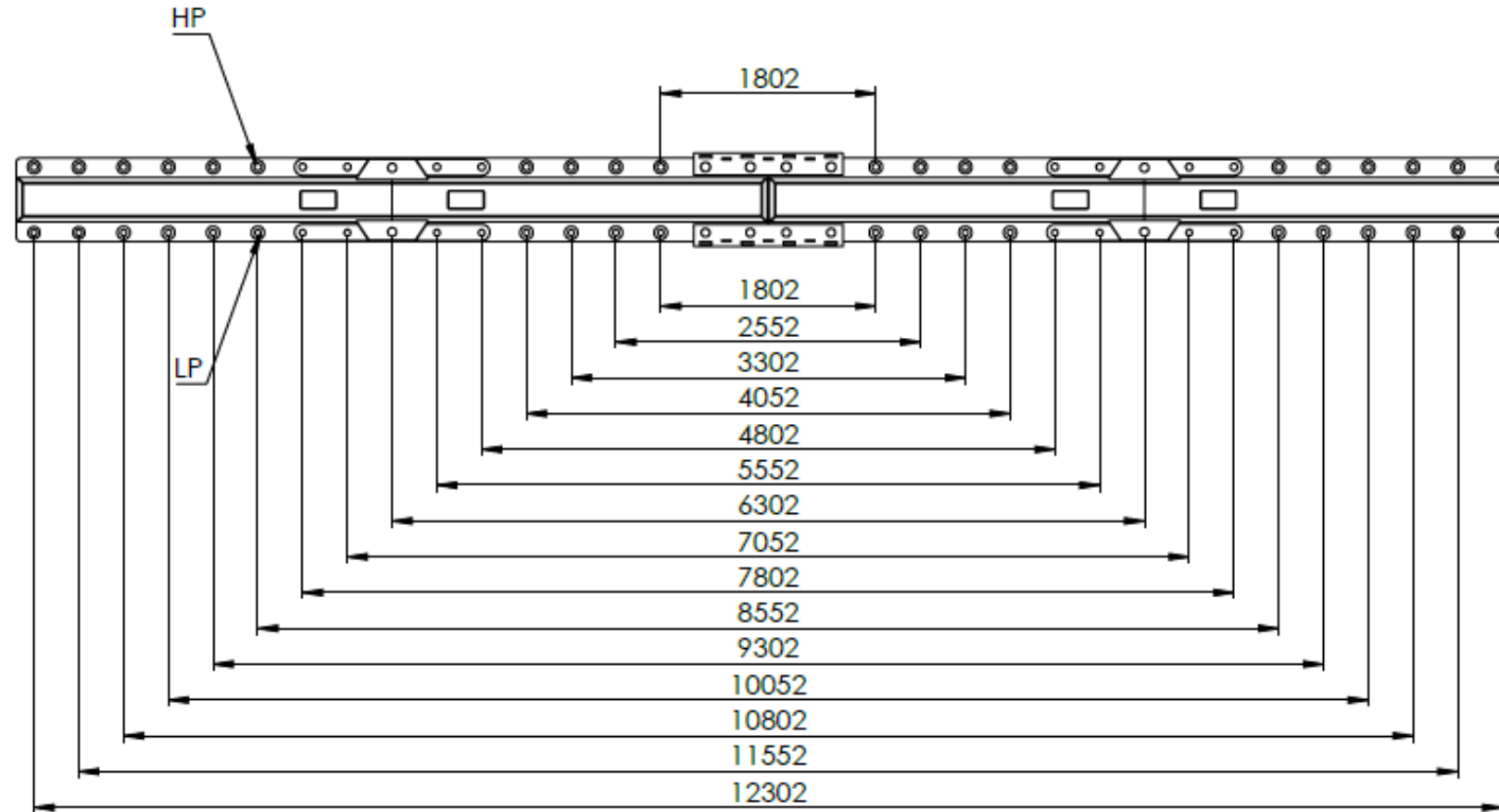
WLL: 50T

HP1 suitable for 55T shackle (Ø 73)

HP2 suitable for 35T shackle (Ø 60)

LP1 suitable for 55T shackle (Ø 73)

LP2 suitable for 25T shackle (Ø 53)



afstand boven	1802	1802	1802	1802	1802	1802	1802	1802	1802	1802	1802	1802	1802	1802	1802
afstand onder	1802	2552	3302	4052	4802	5552	6302	7052	7802	8552	9302	10052	10802	11552	12302
WLL (TON)	70	50	50	50	50	40	38	32	29	22	19	17	15.75	12.75	11.5

- HP staat voor hijspunt
- LP staat voor lastpunt
- wanneer de EVK5060 als spreader wordt gebruikt (wanneer HP en LP zich recht onder elkaar bevinden) kan deze op elke afstand 70T hijsen
- maximale tophoek van 2 sprong mag maximaal 60° zijn.