

USER INSTRUCTIONS

- MODULIFT 34

The Modulift Spreader is modular in length. Every spreader consists of 1 pair of End Units & Drop Links, with intermediate struts that can be assembled to achieve different spans. The Modulift 34 has an assembled span ranging from 1 metre to 8 metres in 0.5 metre increments.

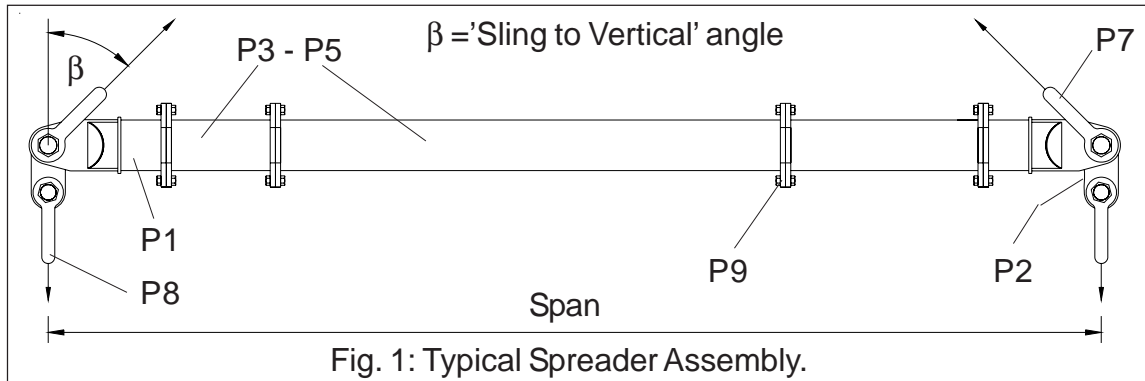
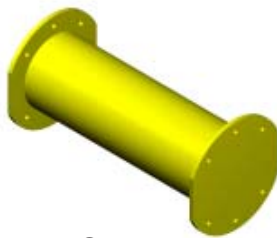


TABLE 1: Component List.

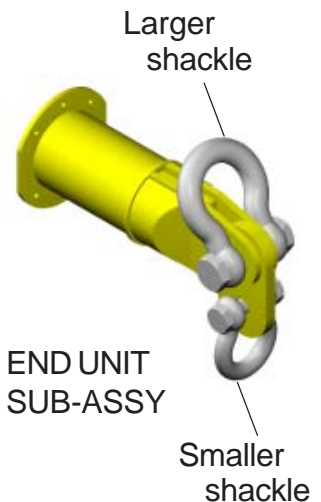
PART REF:	DESCRIPTION	WEIGHT / ITEM
P1	END UNIT	23 KG
P2	DROP LINK	7 KG
P3	2 METRE STRUT	51 KG
P4	1 METRE STRUT	31 KG
P5	0.5 METRE STRUT	20 KG
P7	25t SHACKLE	14 KG
P8	17t SHACKLE	8 KG
P9	M20x50 HT BOLTS, NUTS & WASHERS	-



STRUT



DROP LINK



Modulift 34 - Beam Specification.

- Rated at 34 tonnes WLL at 3 metres span. See Load Table for WLL at longer spans.
- 'Sling to Vertical' angle, β , 45 degrees or less.
- End Units & Drop Links are rated at 17 tonnes (34 tonnes combined capacity).
- **Bolt tightening torque: 150Nm.** Spanner size required: 30mm.



WARNING!

- Personnel using this system should be suitably trained, competent and have a clear understanding of Safe Slings procedures.
- The use of Modulift equipment must be in accordance with the procedures laid down in 'Lifting Operations and Lifting Equipment Regulations 1998' (LOLER).
- NEVER EXCEED STATED WLL - ADHERE TO WLL IN TABLE 2, FOR PARTICULAR SLING ANGLE USED.
- THE SLING LENGTH IS CRITICAL TO THE SAFE USE OF THE SPREADER - ADHERE TO TABLE 2.
- Ensure Drop Links hang down, and smaller shackles are connected to bottom hole of Drop Link.

