

WIRE ROPE WINCHES | *Air winches*

Air winches are suitable for use in practically any environment and are available in a wide range of models.

Load capacity: 10 t. max.

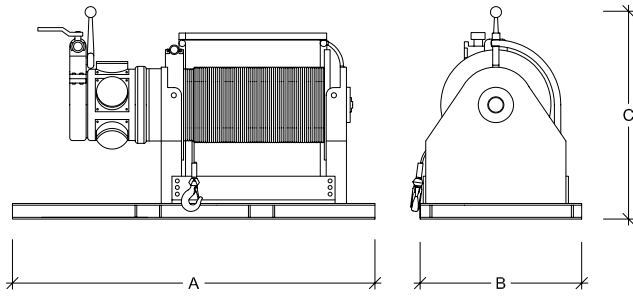
An air service device must be used in conjunction with the air winches.

Air service devices, compressed air distributors (twin and quad) and different length feeder hoses are available separately.

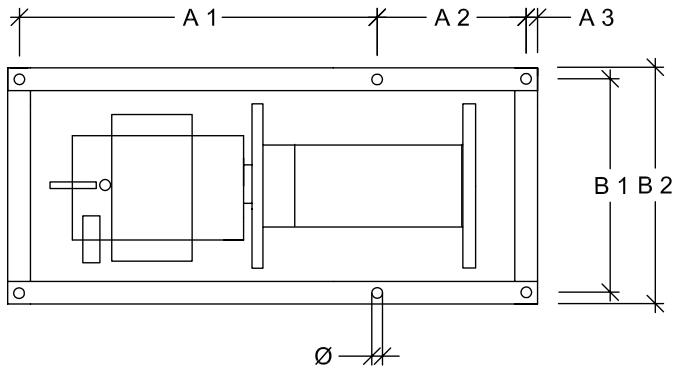


Air winches					
Load capacity in t	Function	1st layer line speed at rated load in m/min	Max. air consumption in m ³ /min	Weight without wire rope in kg	Drum size in mm
1.5	Lifting	7	3.5	60	180
2	Pulling	16	9.5	411	610
1.4	Pulling and lifting	4	3.5	64	180
5	Pulling and lifting	18	19.9	916	610
10	Pulling	10	12	737	368

Air winches					
Recommended wire rope diameter in mm	Maximum number of wire rope layers	Wire rope on drum in m, 1st layer	Wire rope on drum in m, 2nd layer	Wire rope on drum in m, 3rd layer	Wire rope on drum in m, last layer
10	3	8	19	30	30
13	8	42	88	137	437
10	5	8	19	30	57
19	8	39	81	127	410
19	8	17	40	64	218



Dimensions air winches			
Load capacity in t	A	B	C
1.5	443	305	400
2	1,292	610	597
1.4	443	305	400
5	1,500	889	787
10	355	745	810
Dimensions in mm			



Dimensions floor plate					
A1	A2	A3	B1	B2	Ø
248	/	/	166	305	13
254	254	254	508	/	17.5
248	/	/	166	305	13
267	267	267	794	/	21
580	/	/	260	460	21
Dimensions in mm					